



IRIS IS NOW RUNNING IN TAMESIDE AND LANCASHIRE; THROUGH THE VIOLENCE UNIT REDUCTION (VRU), THE 4B PROGRAMME HAS ALSO STARTED!

The first four months of 2023 have seen IRIS expand across the UK. In January, the programme started being delivered in **Tameside** in partnership with Jigsaw Support. In February, teams from Lancashire Victim Services, Fylde Coast Women's Aid and the Wish Centre participated in their first training sessions to start bringing the initiative to General Practices across **Lancashire** (including Blackpool, Blackburn and Darwen). In March and April, through continued support from the Violence Reduce Unit (VRU), four new areas of London also started the 4B Programme: **Richmond and Kingston**, where IRIS is delivered in collaboration with Refuge; and, most recently, in **Newham and Redbridge**, where the programme will be delivered in partnership with the London Black Women's Project and

Aanchal Women's Aid. The work funded by the VRU was extended to increase the reach of IRIS after the successful rollout of the 7B Programme. "The IRISi team had an intense start to the year, marked by many training sessions and a lot of engagement with our partner organisations. We are delighted and excited to have the opportunity to learn and teach, to improve our work and, most of all, to deliver our programmes to the highest standards to make sure that we are achieving our mission of improving the healthcare response to gender-based violence", says Medina Johson, CEO of IRISi.

[Click here to read our news](#)

WE ARE EXCITED TO HAVE ALSO DELIVERED OUR CORE IRIS TRAINING TO THE FEARLESS TEAM IN DEVON. OVER THE LAST FIVE YEARS, WE HAVE WORKED WITH THE DEVON ICB, FEARLESS, AND DEVON RAPE CRISIS & SEXUAL ABUSE SERVICE – AND THE IRIS PROGRAMME HAS BEEN HUGE SUCCESSFUL IN DEVON AND TORBAY. WE ARE PLEASED TO CONTINUE TO BE INVOLVED AS THEY EXPAND THEIR TRAUMA SERVICE ACROSS THE REGION!



GREATER MANCHESTER ANNOUNCES THE EXTENSION OF THE ADVISE PROGRAMME

The ADVISE (Assessing for Domestic Violence and Abuse in Sexual Health Environments) programme supports **sexual health clinicians** to identify and respond to patients affected by Domestic and Sexual Violence and Abuse (D&SVA). Launched by IRISi in 2021, the initiative is currently running in Greater Manchester, Bristol and South Gloucestershire. **Together, these teams have already referred more than 400 patients in less than two years.** The intervention has been showing great results and, for that reason, Greater Manchester, where the programme was initially commissioned, recently announced the extension of ADVISE for one more year.

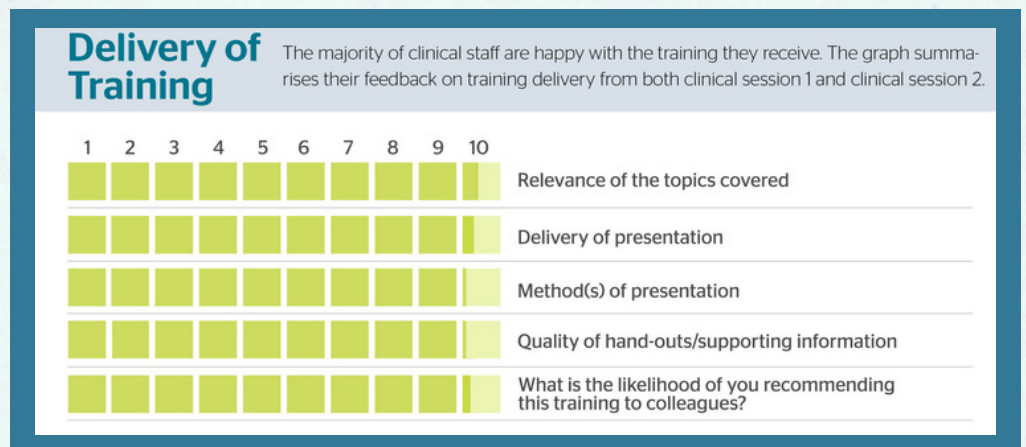
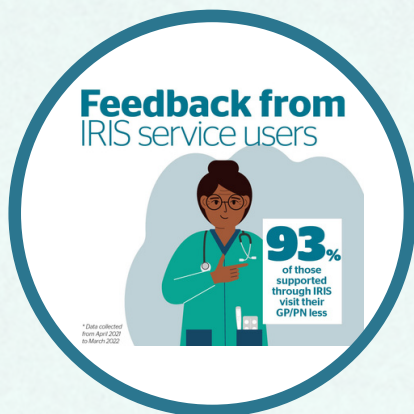
THE VRU will also commission ADVISE in two areas of London

At the same time, the Violence Reduction Unit (VRU) in London have commissioned IRISi to manage grant funding and use it to deliver this initiative in two areas of London. We will be working side by side with nia, to deliver ADVISE in Homerton Hospital/Homerton Trust, and Advance, to deliver ADVISE in St. Mary's Hospital/Imperial Trust. [READ MORE>>](#)



National Report: IRIS received more than 30,000 referrals!

In total, 57 sites have commissioned IRIS since November 2010 up to March 2022. Between April 2021 and March 2022, the IRIS Programme was running in 39 areas across the UK and received 5,813 referrals. During the same period, all but one area of Wales had commissioned the IRIS Programme and 4 new sites came on board. There were 770 training sessions in the year 2021-22 and a total of 1,031 contacts between AEs and general practices (including attending safeguarding meetings or providing advice on individual patients). [READ MORE>>](#)



WOULD YOU LIKE TO GIVE US A HAND?

Do you have something to share about IRISi, IRIS or ADVISE - such as the impact of the intervention, suggestions or feedback? We would love to hear from you! Please email us at: geisa.davo@irisi.org.

Click below to follow us:



HIGHLIGHTS

GET ON BOARD: HERE IS EVERYTHING YOU NEED TO KNOW TO BECOME AN IRISI BOARD DIRECTOR



Closing date for applications: 9.00 am on 8th May 2023.

IRISi wants to recruit up to 2 Board members with experience in policy development; financial management for social enterprises; working in the Domestic and Sexual Violence and Abuse sector; English health and social care commissioning. **How to apply?** We have created a full recruitment pack so you can [click here](#) to access all the information you might need before applying.

We also present our new Chair, Daphne Amevenu, who took on the role at the beginning of 2023 to support our next steps!



Daphne was one of the trustees on IRISi's Board Member since 2021. With extensive experience in bringing innovative solutions to the healthcare sector, Daphne has an interest in mainstreaming diversity and inclusion across her work and has run various initiatives throughout her career to enable this.

Having been involved with IRISi for so long, Daphne is familiar with the challenges and obstacles that the organisation will need to overcome in the short and long term. "IRISi is still in the early stages of its organisational journey and growth. I think this creates space to think, where appropriate and necessary, on how to professionalise and bring in new processes and procedures whilst keeping the heart of IRISi as a social-based organisation. Since I have a background in project management and business consulting, I believe that I can help achieve that, always bearing in mind that, ultimately, as an organisation, we should be focused on the beneficiaries of our interventions", she says.

[READ MORE>>](#)

IF YOU WANT TO KNOW MORE ABOUT THE IRIS PROGRAMME, [CLICK HERE](#).
IF YOU WANT TO KNOW MORE ABOUT THE ADVISE PROGRAMME, [CLICK HERE](#).